

Prince George's County Public Schools Alternative Construction Finance Program Town Hall

Adelphi Middle School December 17, 2020



español (609) 663-4089

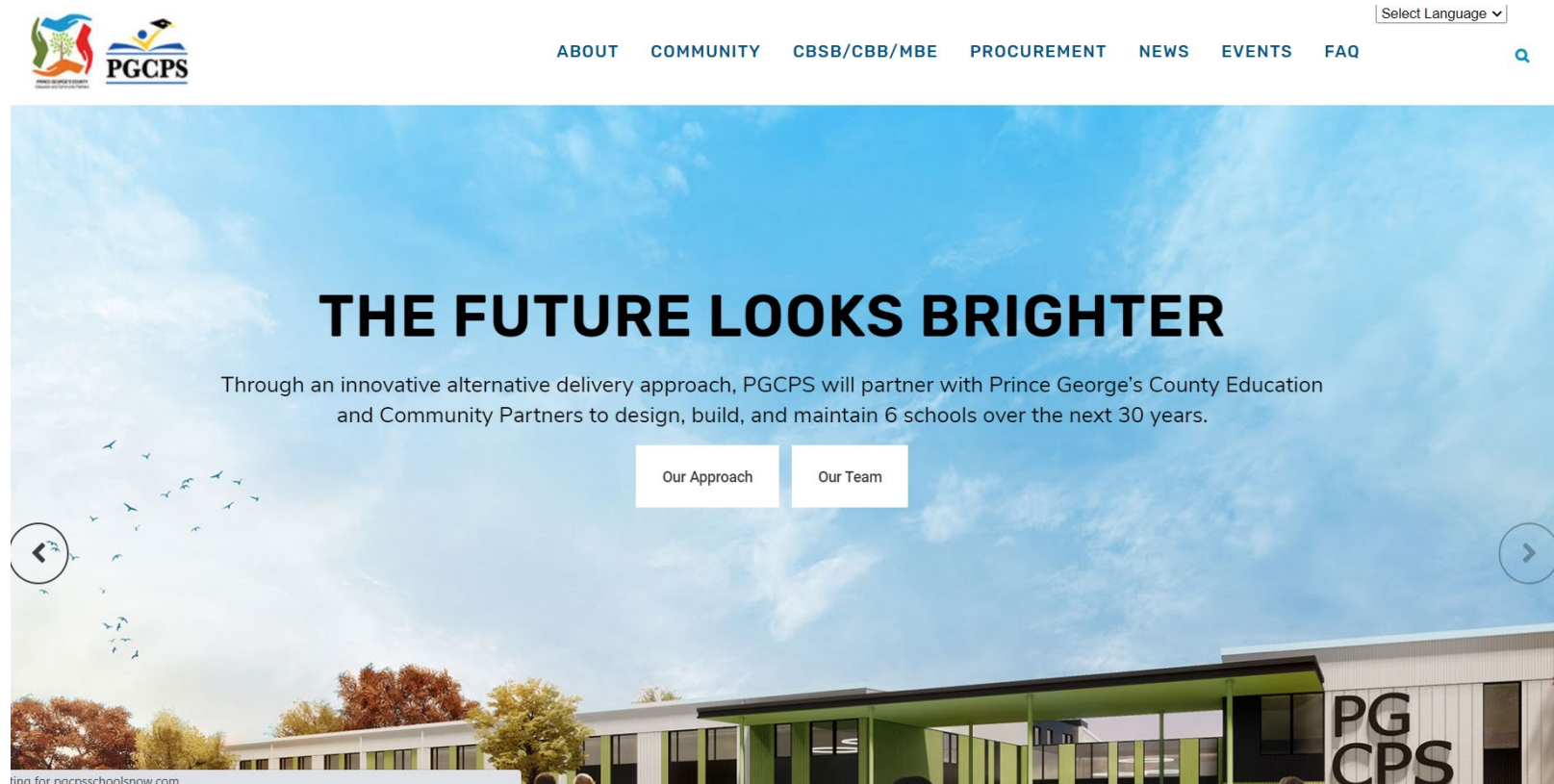


PRINCE GEORGE'S COUNTY
EDUCATION & COMMUNITY PARTNERS



Interpretation and Translation

This presentation is being **interpreted LIVE** in **Spanish at (609) 663-4089**. The PowerPoint will be available in Spanish and French on the program website, by December 31st at www.pgcpsschoolsnow.com.



Town Hall Agenda



español (609) 663-4089

1. Introductions & Meeting Logistics

2. Program Overview
3. Community Engagement Process
4. Community Investment Program
5. Project Overview
6. Project Design
7. Q&A

Introductions: **Today's Presenters & Panelists**



español (609) 663-4089



Jason Washington
PGCPS
Director of Alternative
Construction Finance
Program

Owner



Karen Summerville
Brailsford & Dunlavey
Sr. Communications
and Public Engagement
Manager

Program Coordinator



Michael Ricketts
Gilbane
Senior Design-Build
Executive

Construction



Yvette Stevens
Gilbane
Director of
Economic Inclusion
& Community Affairs



Bill Bradley
Stantec Architecture
Principal Architect

Design



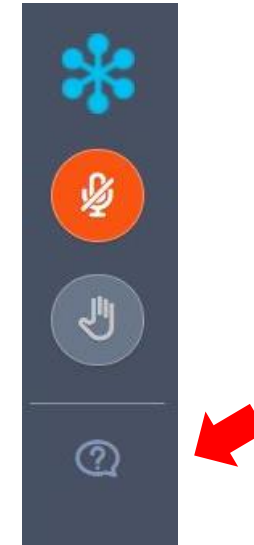
Kathy Dixon
KDA Architects
Founder and
Principal Architect



How to Submit a Question or Comment

At any time during this town hall please submit questions and comments through the **Question function** in your toolbar. Our panelists are able to view what you submit.

It is our goal to address as many questions as possible throughout and at the end of the presentation. All Q&A's will be posted to the program website, www.pgcpsschoolsnow.com, by December 31st.



How to Participate in Polls

During this meeting, we'll ask you to participate in a few polls. The poll questions will fill your monitor along with an option to select one or two answers.

Town Hall Agenda

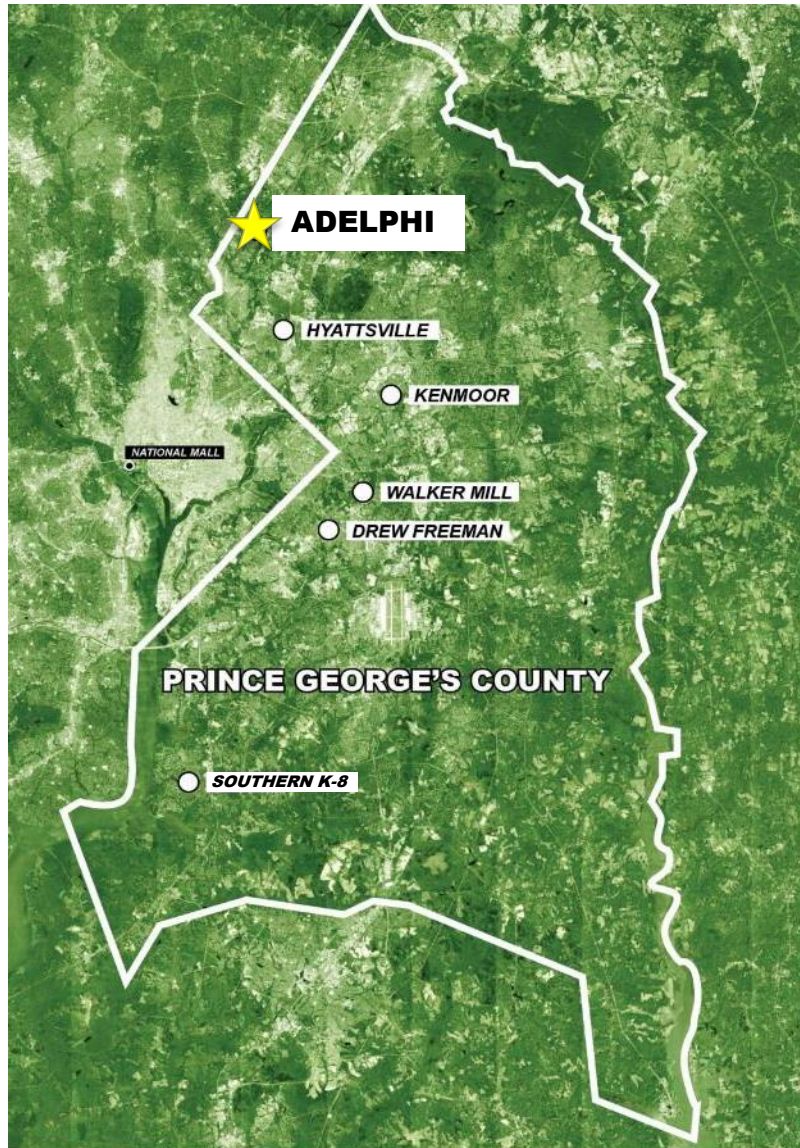


español (609) 663-4089

1. Introductions & Meeting Logistics
- 2. Program Overview**
- 3. Community Engagement Process**
4. Community Investment Program
5. Project Overview
6. Project Design
7. Q&A



Program Overview: **Background**

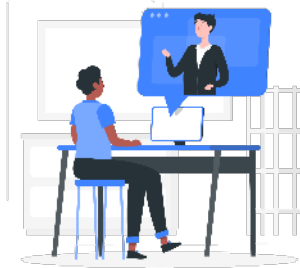


Design-Build-Finance-Maintain (DBFM) Program

- Six New Schools
 - Five - 1,200 student middle schools
 - One - 2,000 student K-8
- Currently in the Exclusive Negotiation Agreement Period
- 3 Year Design-Build Phase (2020 – 2023)
- 30 Year Building Maintenance Period (2023 – 2053)

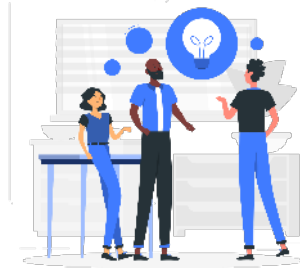


Program Overview: **Community Engagement Process**



Town Hall Meetings

- ✓ On-going town halls provided for each school community.
- ✓ Presentations will include project and community impact updates.
- ✓ Participants' questions are addressed during the meeting; all follow-up materials/additional info is provided on the program website:
www.pgcpsschoolsnow.com



Project Planning Committees (PPC)

- ✓ PPC teams are representative of individual school communities, selected and led by school principals.
- ✓ PPCs will use their community and school-based expertise to inform design and actively participate in each phase of the design-build period.
- ✓ Feedback loop provides opportunities for PPCs to provide guidance and support the advancement of the school design.



Community Investment

- ✓ PGCECP will provide monthly MBE/CBB outreach and pre-certification events.
- ✓ Community investment opportunities and program updates will be shared at town halls, with the PPCs and on the program website.



Town Hall Agenda



español (609) 663-4089

1. Introductions & Meeting Logistics
2. Program Overview
3. Community Engagement Process
- 4. Community Investment Program**
5. Project Overview
6. Project Design
7. Q&A



Community Investment Program: **Employment, Business, Educational, Community Service**



Employment

Program 'job bank'

Internships & Apprenticeships



Business Opportunities

MBE/CBB/CBSB Firms

Mentor-Protégé Program



Educational Programs

Scholarships, ACE Program

CTE Involvement



Community Service

Projects



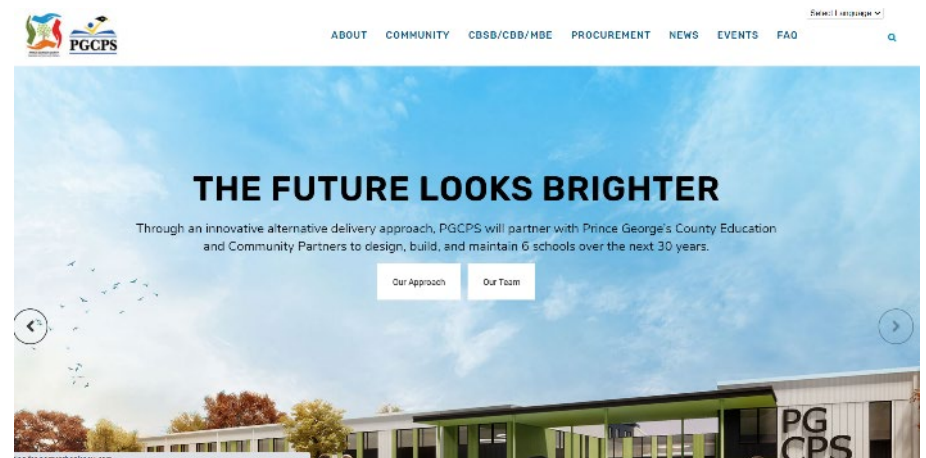
CBB/CBSB/MBE Requirements

- 30% MBE
 - 20% CBB
- Maximize Local Business

Participation

- Bid package breakdown
- Contractor matchmaking

www.pgcpsschoolsnow.com





Community Investment Program: **Community Services and Amenities**



- 'Customized' services/amenities plan for each individual community
- Work with communities & stakeholders to identify desired services/amenities
- Individual school project teams will volunteer time, tools, materials, resources
- Example Services:
 - Food, Clothing, School Supply Drives
 - Habitat for Humanity project
 - Rebuilding Together project

Town Hall Agenda



español (609) 663-4089

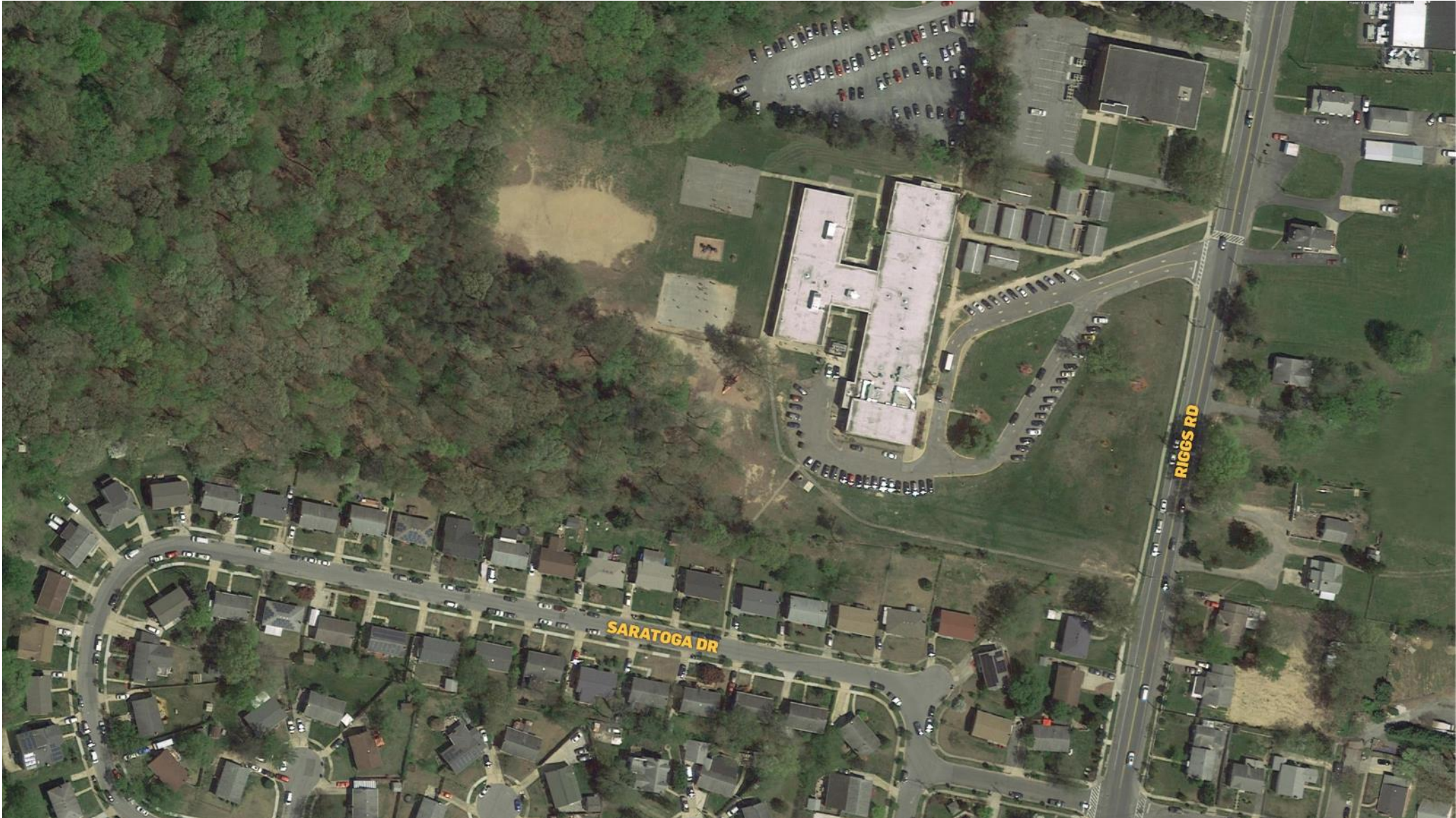
1. Introductions & Meeting Logistics
2. Program Overview
3. Community Engagement Process
4. Community Investment Program

5. Project Overview

6. Project Design
7. Q&A



Project Overview: **Adelphi**





Project Overview: **Schedule**

Schedule	2020				2021				2022				2023				2023-2053																																																																																																																																																																																																																																																																																																																																																																																																																																																																																																																																																																																																																																																																																																																																																																																																																																																																																																																																																																																																																																																																																																																																																																																																																																																																																																																																																																																																																																																																																																																																																											
Quarter	1	2	3	4	1	2	3	4	1	2	3	4	1	2	3	4																																																																																																																																																																																																																																																																																																																																																																																																																																																																																																																																																																																																																																																																																																																																																																																																																																																																																																																																																																																																																																																																																																																																																																																																																																																																																																																																																																																																																																																																																																																																																												
Program Bid, Award and Negotiation																																																																																																																																																																																																																																																																																																																																																																																																																																																																																																																																																																																																																																																																																																																																																																																																																																																																																																																																																																																																																																																																																																																																																																																																																																																																																																																																																																																																																																																																																																																																																																												

Town Hall Agenda



español (609) 663-4089

1. Introductions & Meeting Logistics
2. Program Overview
3. Community Engagement Process
4. Community Investment Program
5. Project Overview
- 6. Project Design**
7. Q&A



Project Design:



Adelphi Middle School





Project Design:





Project Design:





Project Design:

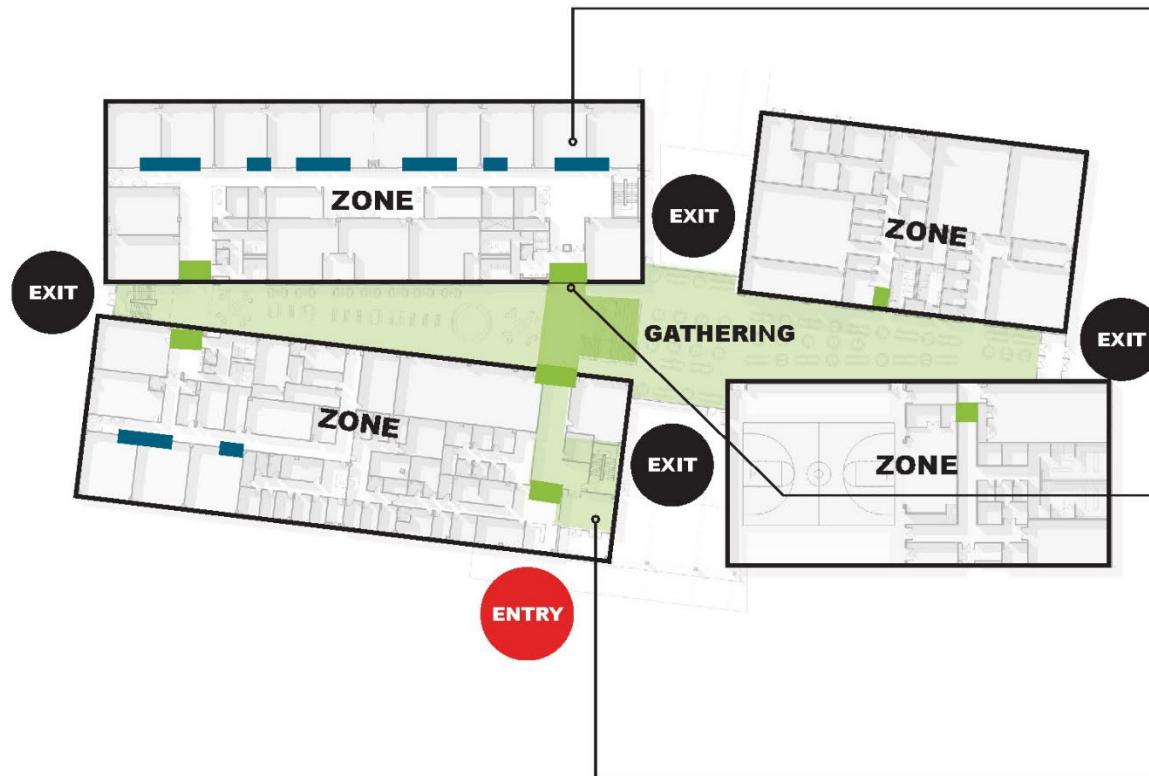




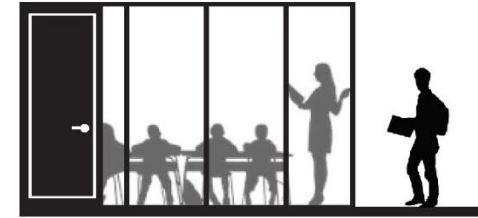
Project Design:

SECURITY CONSIDERATIONS

The building has multiple layers of safety and security. The secure vestibule requires visitors to check in with the front office before being granted access to the building. The academic areas can be isolated from more public areas by closing doors at entrances to "houses". Under normal school conditions, the doors to the 'houses' remain in an held-open position for easy circulation and an inviting entrance into each academic area. However, doors to the academic areas can be locked should the need arise without compromising emergency exiting routes. Classroom areas with glazing into collaboration areas are equipped with blinds should the occupants feel the need to obstruct the view into the room.

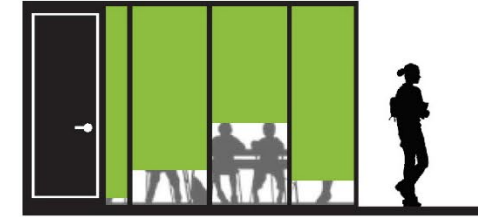


BLINDS UP

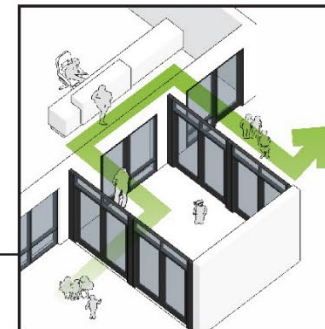


Visibility from classroom for view into collaboration areas and for awareness of events outside of classroom

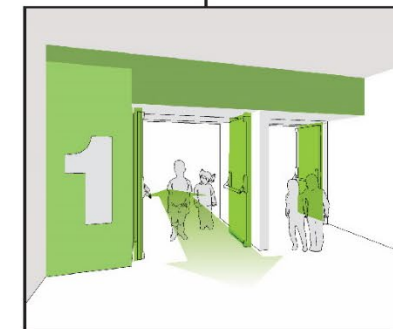
BLINDS DOWN



Window treatments help distraction and privacy needs, as well as eliminating visibility into room during lockdown



Secure entry sequence at front office



Lockdown entrance to 'houses' and other zones to compartmentalize building



Project Design:





Project Design:





Project Design:





Next Steps

Town Halls

- Today's presentation materials and Q&A will be posted by December 31st to www.pgcpsschoolsnow.com in English, Spanish and French.
- The next town hall meeting will take place in February 2021 (exact date to be announced).

Project Planning Committees

All school-based PPC design meetings start in January 2021.

SWING SPACE PLANNING

There will be a Swing Space Town Hall early next Spring to provide logistics around timeline, academic/school program, and transportation.

Adelphi's swing space for SY 21-23 is:

Current Cherokee Lane ES - 9000 25th Ave,
Adelphi, MD 20783

PGCPS Boundary Studies

Comprehensive School Boundary Initiative
Community Conversations:

- Thurs, Jan 7
- Sat, Jan 9 (in Spanish)
- Tues, Jan 12
- Wed, Jan 13

The Boundary Initiative web portal is
accessible from:

<https://offices.pgcps.org/schoolboundaries/>

THANK YOU

Questions: jason.washington@pgcps.org



PRINCE GEORGE'S COUNTY
EDUCATION & COMMUNITY PARTNERS